



Virginia Healthcare Workforce Briefs

Indicators from the Bureau of Labor Statistics'
Current Employment Statistics Survey
Series 2: Regional & Sectoral Employment

Series 2, Issue 138

September 2023

Inside this Brief:

Regional Employment	2
Regional Employment Growth	2
Subsector Employment	3
Subsector Employment Growth	4
Region Map	5
About the Data	6

Highlights

- ◆ Data in this series are not seasonally adjusted and exhibit short-term volatility from fluctuations in holidays, weekends, weather and other seasonal factors. Estimates for the most recent month are preliminary.
- ◆ Northern Virginia's Health Care & Social Assistance (HC&SA) sector enjoyed its fourth consecutive month of positive employment growth after creating 2,200 new jobs in August, a gain that translates into an impressive 18.6% annualized growth rate. At the same time, Hampton Roads' HC&SA sector produced 500 new jobs, while Richmond increased HC&SA employment by 300. However, HC&SA employment in the Rest of Virginia fell by 1,300 in August.
- ◆ Ambulatory Health Care Services created 1,500 new jobs in August, a gain that represents a one-month annualized employment growth rate of 8.8%. With this gain, Ambulatory Health Care Services have now increased employment in each of the past seven months. Meanwhile, Hospitals added 400 new jobs in August, and Nursing & Residential Care Facilities increased employment by 200 during the month. On the other hand, Social Assistance lost 400 jobs in August.

Data in this report are not seasonally adjusted. Self-employed persons, including health professionals in private practice, are not included.

Data in Brief

Not Seasonally Adjusted*	Employment, in Thousands				Growth Rate, Annualized		
	Aug. 2022	May 2023	July 2023	Aug. 2023	12 Month	3 Month	1 Month
Virginia							
Total Nonfarm	4,094.5	4,149.9	4,147.1	4,151.2	1.4%	0.1%	1.2%
Health Care & Social Assistance	463.2	474.5	478.3	480.0	3.6%	4.7%	4.3%
Hampton Roads							
Total Nonfarm	794.7	801.3	799.5	796.5	0.2%	-2.4%	-4.4%
Health Care & Social Assistance	96.2	100.1	100.0	100.5	4.5%	1.6%	6.2%
Northern Virginia							
Total Nonfarm	1,551.8	1,566.1	1,570.0	1,576.2	1.6%	2.6%	4.8%
Health Care & Social Assistance	147.5	150.1	153.5	155.7	5.6%	15.8%	18.6%
Richmond							
Total Nonfarm	702.8	711.2	715.9	713.6	1.5%	1.4%	-3.8%
Health Care & Social Assistance	86.2	86.8	85.4	85.7	-0.6%	-5.0%	4.3%
Rest of Virginia							
Total Nonfarm	1,045.2	1,071.3	1,061.7	1,064.9	1.9%	-2.4%	3.7%
Health Care & Social Assistance	133.3	137.5	139.4	138.1	3.6%	1.8%	-10.6%

Preliminary estimates are italicized

* Seasonally adjusted data are adjusted by the Bureau of Labor Statistics to account for weather and other seasonal changes. Since the U.S. Bureau of Labor Statistics does not provide seasonally adjusted data at this level, this series uses **non**-seasonally adjusted data exclusively. Seasonal variation may account for some of the variation in time series data. When comparing data in this series to other HWDC series or other publications, it is important to note whether the data reported have been seasonally adjusted.

Regional HC&SA Employment Growth, Level

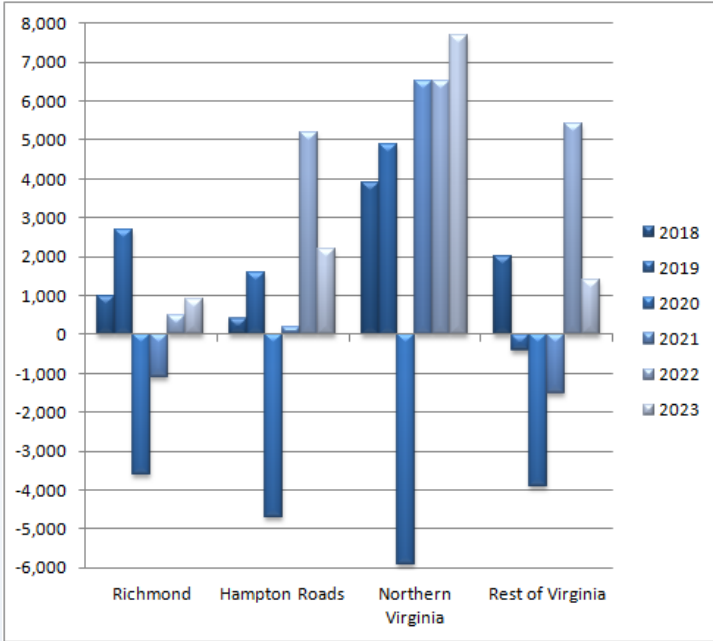


Figure 1: Annual & YTD Change in HC&SA Regional Employment (Not Seasonally Adjusted, Full-Year Change for 2018-2022, Year-to-Date Change for 2023).

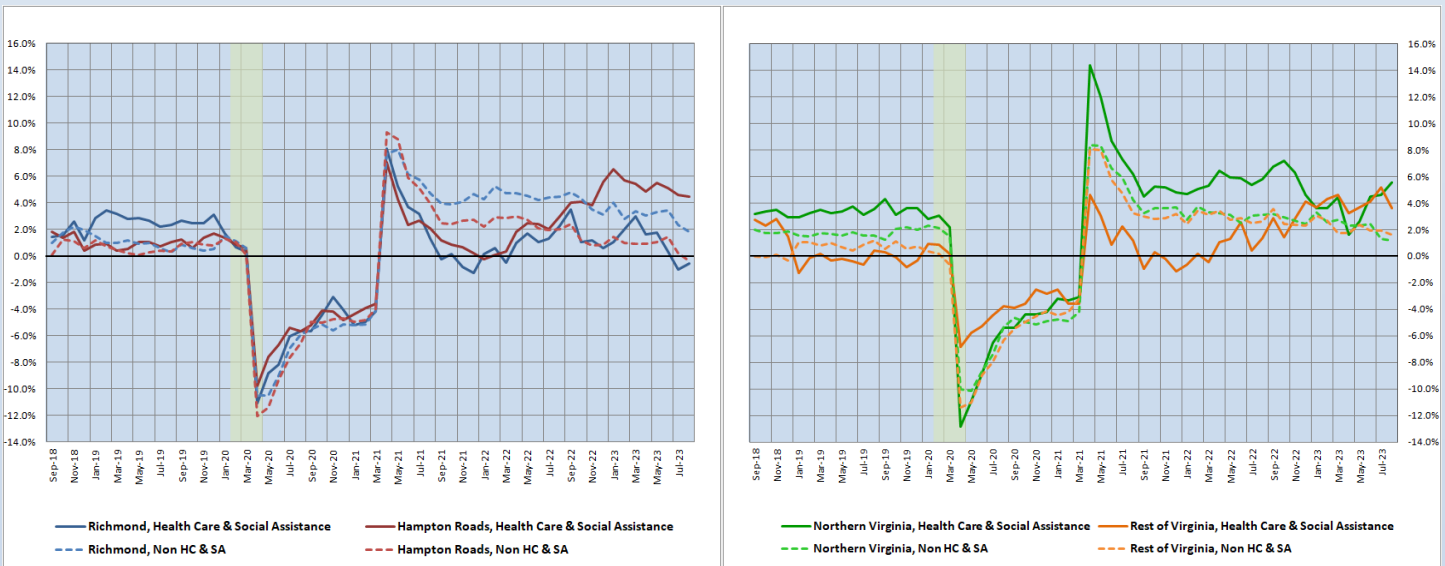
According to the preliminary data released on Tuesday, September 19, 2023, by the U.S. Department of Labor, Bureau of Labor Statistics, Northern Virginia enjoyed another strong month of Health Care & Social Assistance (HC&SA) employment growth. In August, Northern Virginia’s HC&SA sector created 2,220 new jobs, a gain that represents a one-month annualized employment growth rate of 18.6%. Northern Virginia has experienced a particularly robust HC&SA job market in 2023. So far this year, HC&SA employment in Northern Virginia has increased by 7,700. This year-to-date gain already exceeds the 6,500 HC&SA jobs that were created across Northern Virginia in all of 2022.

In August, both Hampton Roads and Richmond enjoyed their second consecutive month of positive HC&SA employment growth. Hampton Roads created 500 new HC&SA jobs in August, while Richmond added 300 new HC&SA jobs during the month. These gains translate into one-month annualized growth rates of 6.2% and 4.3%, respectively. Meanwhile, the Rest of Virginia lost 1,300 HC&SA jobs in August.

Year-Over-Year Regional Employment Growth

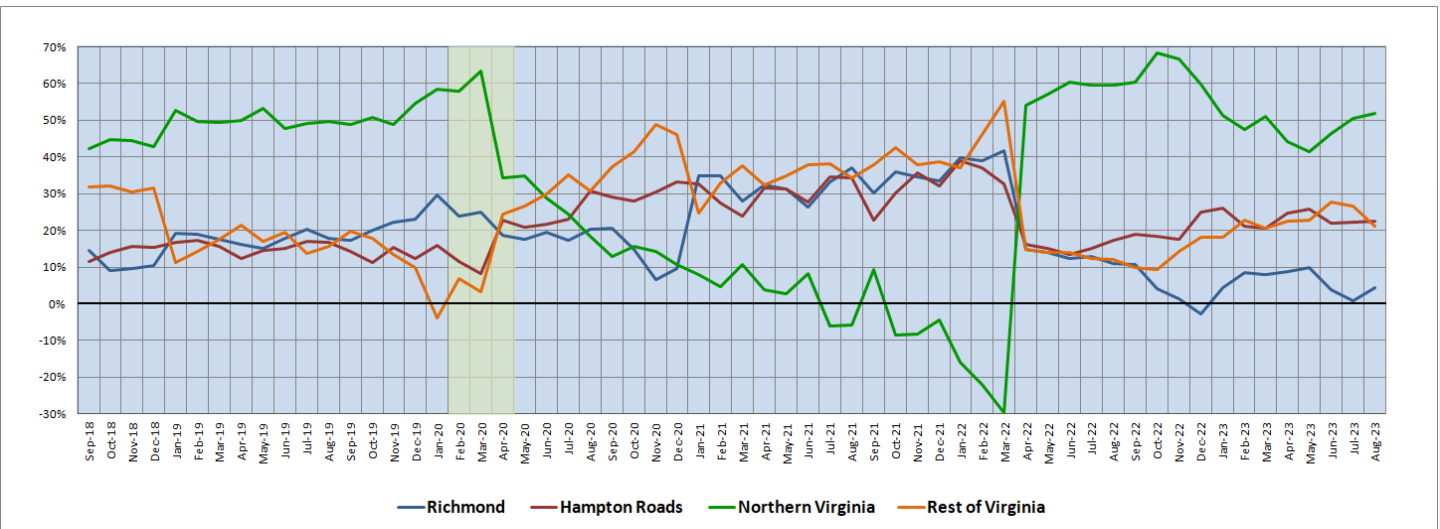
In August, Northern Virginia’s year-over-year HC&SA employment growth rate increased from 4.64% to 5.56%. With this gain, this growth rate has more than tripled since reaching a two-year low of 1.64% in April. Northern Virginia is now enjoying the fastest year-over-year HC&SA employment growth in the state, a distinction held in July by the Rest of Virginia, which saw its own growth rate fall from 5.21% to 3.60% in August. At the same time, Hampton Roads’ HC&SA sector saw its own year-over-year employment growth rate fall from 4.60% to a nine-month low of 4.47%. Finally, Richmond’s HC&SA sector experienced a slight improvement to its own growth rate, which increased from -1.04% to -0.58%.

Figure 2: Year-Over-Year Employment Growth (Not Seasonally Adjusted).



Regional Share of 24-Month Employment Growth

Figure 3: Regional Share of Previous 24-Month Employment Growth in Virginia’s HC&SA Sector (Not Seasonally Adjusted).



In August, Northern Virginia saw its 24-month HC&SA employment growth share increase from 50.53% to a year-to-date high of 51.91%. Northern Virginia has retained the highest 24-month employment growth share in the state’s HC&SA sector since April 2022. During this time period, its growth share has never fallen below 41.38%. Meanwhile, Hampton Roads experienced a small increase to its 24-month HC&SA employment growth share, which rose from 22.26% to 22.61% during the month. At the same time, Richmond’s HC&SA sector saw its 24-month HC&SA employment growth share reach a three-month high after increasing from 0.71% to 4.46%. As for the Rest of Virginia, its 24-month HC&SA employment growth share fell from 26.50% to 21.02%, thereby reaching its lowest value in five months.

HC&SA Subsector Employment Growth, Level

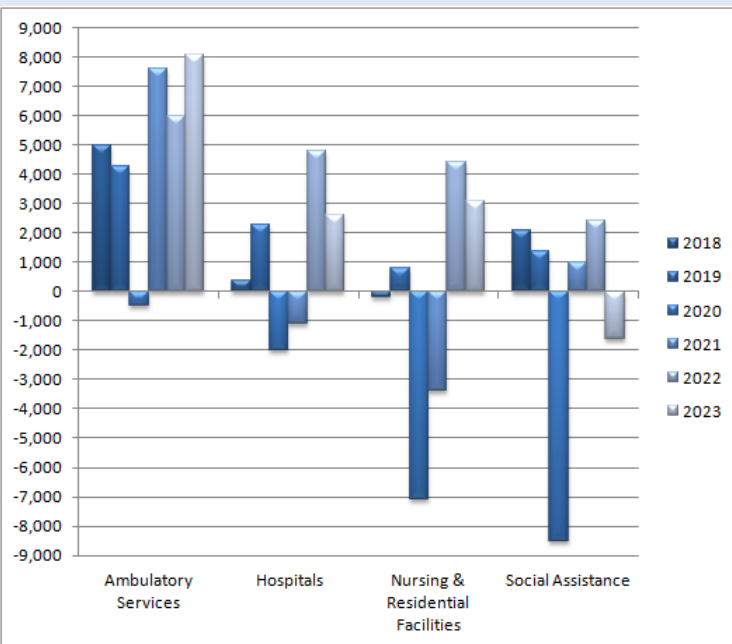


Figure 4: Annual & YTD Change in HC&SA Subsector Employment (Not Seasonally Adjusted, Full-Year Change for 2018-2022, Year-to-Date Change for 2023).

For the second consecutive month, Ambulatory Health Care Services was the main contributor to the state’s total HC&SA employment gain. After having contributed 2,200 of the 2,900 HC&SA jobs produced in Virginia in July, Ambulatory Health Care Services added 1,500 of the 1,700 total HC&SA jobs created across the state in August. With this gain, Ambulatory Health Care Services have increased employment in each of the past seven months. In total, Ambulatory Health Care Services have produced 8,100 jobs so far this year. Even if Ambulatory Health Care Services were to create no additional jobs in 2023, it would still represent the strongest full-year employment gain in this HC&SA subsector in more than one decade.

Meanwhile, Hospitals created 400 new jobs in August, and Nursing & Residential Care Facilities increased employment by 200 during the month. With these gains, both of these HC&SA subsectors have now increased employment in each of the past three months. On the other hand, Social Assistance saw employment fall by 400 in August.

Distribution of Growth by Subsector

Not Seasonally Adjusted	Employment, in Thousands				Growth Rate, Annualized		
	Aug. 2022	May 2023	July 2023	Aug. 2023	12 Month	3 Month	1 Month
Virginia							
Health Care & Social Assistance	463.2	474.5	478.3	480.0	3.6%	4.7%	4.3%
<i>Ambulatory Health Care Services</i>	205.4	209.8	212.7	214.2	4.3%	8.7%	8.8%
<i>Hospitals</i>	108.2	110.7	112.3	112.7	4.2%	7.4%	4.4%
<i>Nursing & Residential Care Facilities</i>	71.4	74.6	75.6	75.8	6.2%	6.6%	3.2%
<i>Social Assistance</i>	78.2	79.4	77.7	77.3	-1.2%	-10.2%	-6.0%
Hampton Roads							
Health Care & Social Assistance	96.2	100.1	100.0	100.5	4.5%	1.6%	6.2%
<i>Hospitals</i>	22.0	22.6	22.8	22.9	4.1%	5.4%	5.4%
Northern Virginia							
Health Care & Social Assistance	147.5	150.1	153.5	155.7	5.6%	15.8%	18.6%
<i>Ambulatory Health Care Services</i>	76.0	77.5	81.5	82.3	8.3%	27.2%	12.4%
<i>Hospitals</i>	28.0	28.6	28.9	29.1	3.9%	7.2%	8.6%

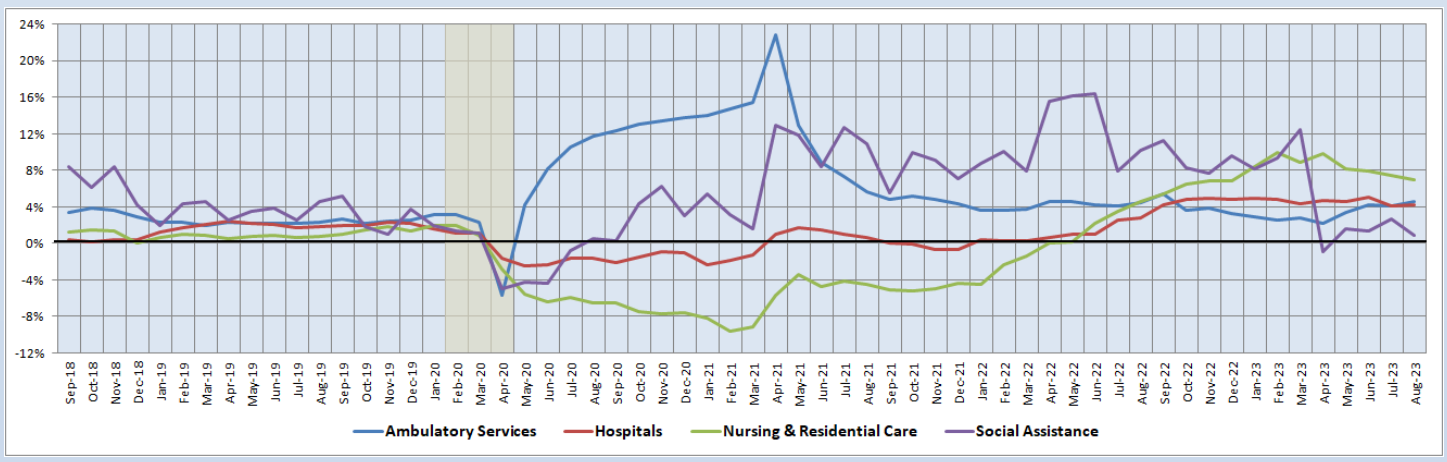
Preliminary estimates are italicized

Ambulatory Health Care Services have enjoyed very strong employment growth over the last several months. In August, Ambulatory Health Care Services increased employment at an 8.8% annualized rate. Over the past three months, Ambulatory Health Care Services have created jobs at a nearly equivalent 8.7% annualized rate. Both of these growth rates are the highest in the state among Virginia’s four HC&SA subsectors. However, long-term HC&SA subsector employment growth has been most prominent in Nursing & Residential Care Facilities. Over the past year, employment in Nursing & Residential Care Facilities has grown by 6.2%.

12-Month Average Employment Growth by Subsector

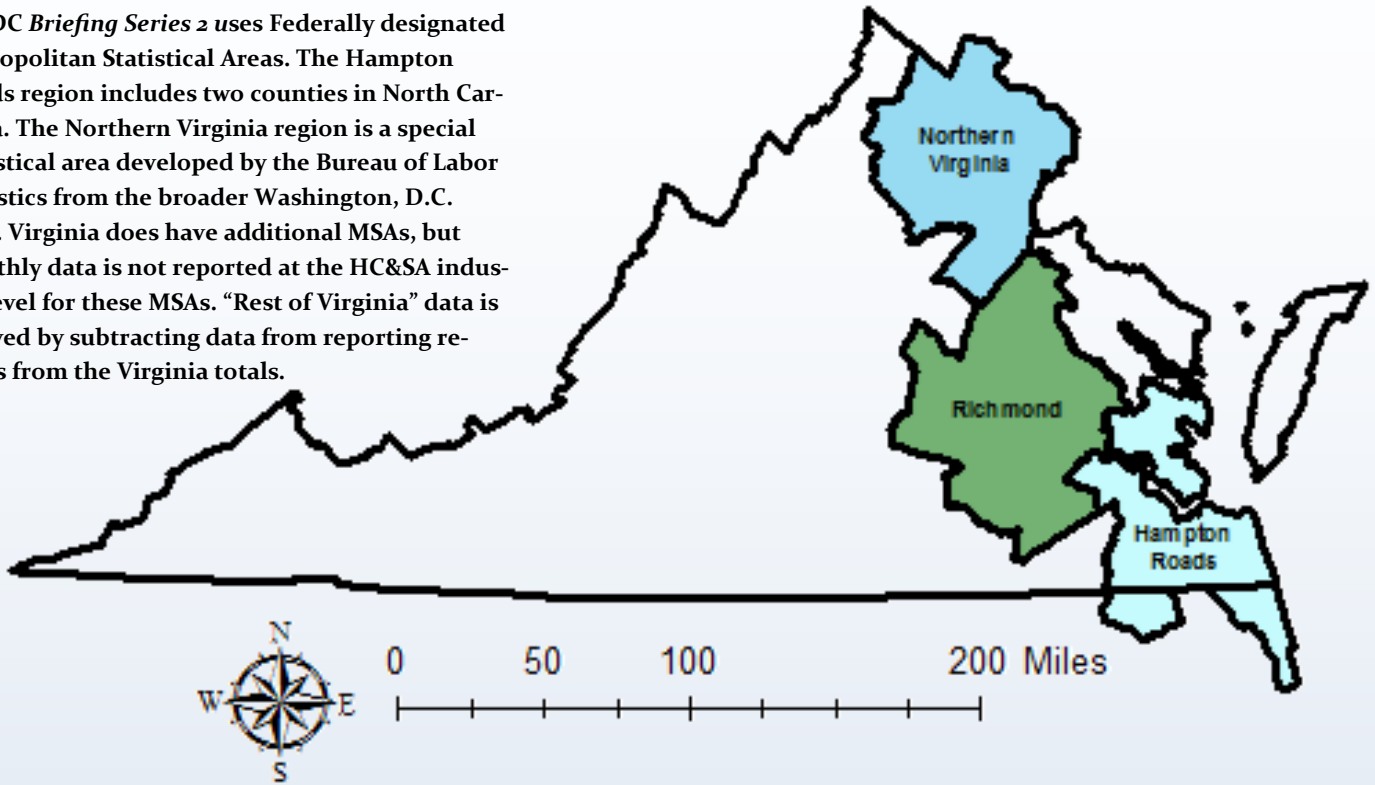
For the fourth consecutive month, Nursing & Residential Care Facilities experienced a decline to its 12-month employment growth rate moving average, which fell from 7.47% to a new year-to-date low of 7.00% in August. Despite this decline, Nursing & Residential Care Facilities still have the highest 12-month employment growth rate moving average in the state. Ambulatory Health Care Services saw their 12-month employment growth rate moving average increase from 4.08% to 4.61%, while the comparable moving average for Hospitals rose from 4.09% to 4.27%. On the other hand, the 12-month employment growth rate moving average for Social Assistance fell from 2.72% to 0.83% in August.

Figure 5: 12-Month Moving Average, HC&SA Subsector Employment Growth Rate (Not Seasonally Adjusted).



Region Map

HWDC *Briefing Series 2* uses Federally designated Metropolitan Statistical Areas. The Hampton Roads region includes two counties in North Carolina. The Northern Virginia region is a special statistical area developed by the Bureau of Labor Statistics from the broader Washington, D.C. MSA. Virginia does have additional MSAs, but monthly data is not reported at the HC&SA industry level for these MSAs. “Rest of Virginia” data is derived by subtracting data from reporting regions from the Virginia totals.



Region Detail

Northern Virginia		Richmond		Hampton Roads	
<i>Northern Virginia, VA (Non-standard CES Area 94783)</i>		<i>Richmond, VA (MSA 40060)</i>		<i>Virginia Beach-Norfolk-Newport News, VA-NC (MSA 47260)</i>	
Counties:	Cities:	Counties:	Cities:	Counties:	Cities:
Arlington	Alexandria	Amelia	Colonial Heights	Gloucester	Chesapeake
Clarke	Fairfax	Caroline	Hopewell	Isle of Wight	Hampton
Culpeper	Falls Church	Charles City	Petersburg	James City	Newport News
Fairfax	Fredericksburg	Chesterfield	Richmond	Mathews	Norfolk
Fauquier	Manassas	Dinwiddie		Surry	Poquoson
Loudoun	Manassas Park	Goochland		York	Portsmouth
Prince William		Hanover			Suffolk
Rappahannock		Henrico		<i>Currituck, NC</i>	Virginia Beach
Spotsylvania		King William		<i>Gates, NC</i>	Williamsburg
Stafford		New Kent			
Warren		Powhatan			
		Prince George			
		Sussex			

Healthcare Workforce
Data Center

Perimeter Center
9960 Mayland Drive, Suite 300
Henrico, VA 23233-1463

Phone: (804) 597-4213
Fax: (804) 527-4434
E-mail: hwdc@dhp.virginia.gov
Website: www.dhp.virginia.gov/PublicResources/HealthcareWorkforceDataCenter

HWDC Staff:

Yetty Shobo, PhD <i>Director</i>	Barbara Hodgdon, PhD <i>Deputy Director</i>
Rajana Siva, MBA <i>Data Analyst</i>	Christopher Coyle, BA <i>Research Assistant</i>

Follow us on. . .

Tumblr: <http://vahwdc.tumblr.com/>

About the Data

Data in this report are from the U.S. Department of Labor, Bureau of Labor Statistics' Current Employment Statistics program. The CES program surveys about 143,000 businesses and government agencies monthly. Unless otherwise noted, this series uses data that are not seasonally adjusted. Seasonal variations related to weather, holidays, weekends, seasons and other predictable variations are apparent in the data. Short-term changes may be related to seasonal changes rather than underlying trends. Data from recent months are preliminary and subject to revision in future releases from the CES. Revisions will be reported in future editions of this series. Unless otherwise noted, the CES data presented in this series:

Includes:

- ◆ Data on employed individuals drawing a paycheck (payroll employees).
- ◆ All employees, regardless of role, occupation or hours worked.
- ◆ HC&SA employees in the private sector only.
- ◆ Persons employed by health professionals in private practice.
- ◆ Both government and private sector workers in nonfarm employment data.

Does not include:

- ◆ Self-employed workers or volunteers, including health professionals in private practice.
- ◆ HC&SA employees in the public sector (These are counted as government workers in monthly reports).
- ◆ Information on hours worked or the quality of employment.
- ◆ Government workers in HC&SA level data (Government workers, regardless of occupation and role, are classified as public sector employees).

The Department of Health Professions' Healthcare Workforce Data Center works to improve the data collection and measurement of Virginia's healthcare workforce through regular assessment of workforce supply and demand issues among the 80 professions and 350,000 practitioners licensed in Virginia by the DHP.

The HWDC collects data on Virginia's licensed health professionals through surveys completed during the online license renewal and application process. Survey results and data may be accessed on our website: www.dhp.virginia.gov/PublicResources/HealthcareWorkforceDataCenter/.

The HWDC also provides a series of Virginia Healthcare Workforce Briefs based on data collected by the U.S. Department of Labor's Bureau of Labor Statistics and the U.S. Department of Commerce's Bureau of Economic Analysis.

Virginia Healthcare Workforce Briefs:

Series 1: State & National Employment (Monthly)

Series 2: Virginia Regional & Sectoral Employment (Monthly)

Series 3: Income & Compensation (Quarterly)